

Company Overview

NovAtel Inc. designs, markets, and supports a broad range of products that determine precise geographic locations using the Global Positioning System (GPS). The system is comprised of 24 earth orbiting satellites that transmit radio signals 24 hours a day worldwide. GPS receivers calculate the distance from the satellites to the receiver and then use a triangulation technique to determine exact geographical locations. GPS is used for a variety of purposes, including navigating, tracking, mapping, and conducting geographical surveys.

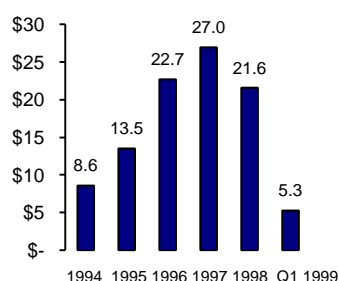
NovAtel focuses on high-end GPS applications such as surveying, geographic information systems (GIS), aviation, marine, mining and machine control and agriculture with technologically innovative products that provide high levels of accuracy, real-time positioning and reliability. According to industry sources, these market segments represent an estimated US\$1.3B in 1997 and are expected to grow to approximately US\$2.0 billion in 2000. NovAtel is not active in low-end GPS applications such as vehicle navigation and the consumer/cellular market.

Investor Information (at 5/13/99)

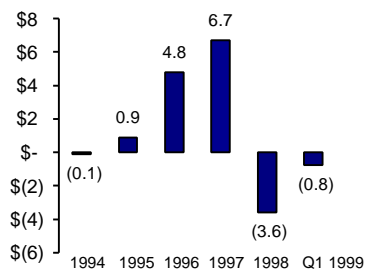
Nasdaq:	NGPS	CAGR 1993-98	
Price:	US\$2.00	Sales:	35%
Market capitalization:	US\$15.3 million	52-week price range:	US\$1.375 - US\$6.875
Shares outstanding:	7,674,040		

Financial Highlights

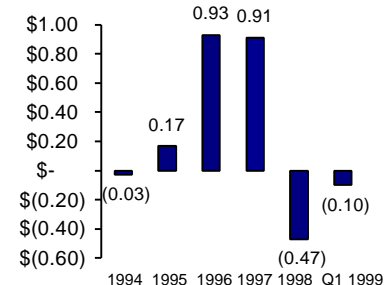
Revenue
CDN\$ Millions



Net Income (Loss) From Continuing Operations
CDN\$ Millions



Net Income (Loss) From Continuing Operations - Per Share (basic)
CDN\$



Statement of Operations
(CDN\$ in thousands, except per share data)

	Three months ended	
	3/31/99	4/4/98
Revenue	\$ 5,270	\$ 4,765
Net income (loss) from continuing operations	\$ (770)	\$ (1,174)
Net income (loss) per share from continuing operations (basic)	\$ (0.10)	\$ (0.15)
Net income (loss) per share from continuing operations (fully diluted)	\$ (0.10)	\$ (0.15)

Balance Sheet
(CDN\$ in thousands)

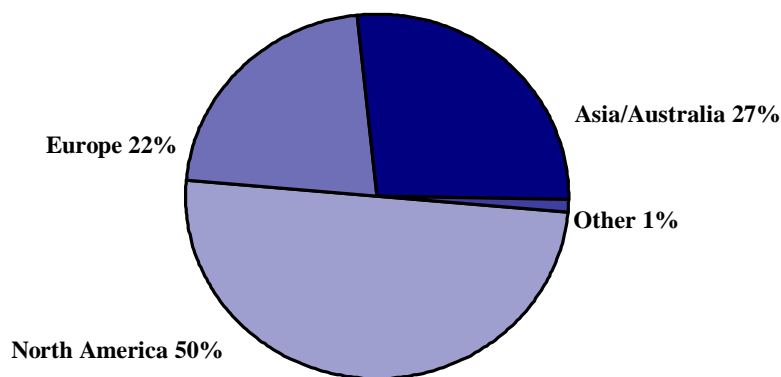
	at 3/31/99	at 12/31/98
Cash and short term investments	\$ 11,274	\$ 4,486
Debt-current	\$ 0	\$ 0
Debt-long term	\$ 0	\$ 0
Total shareholders' equity	\$ 22,016	\$ 22,786

Recent Developments

- ◆ In May 1999, NovAtel and Veritas DGC Inc. (NYSE & TSE:VTS) successfully tested a new remote survey capability that will allow land survey crews to use satellite communications, high precision GPS, the Internet and thin-client digital mapping technology to monitor and record GPS positioning data acquired in remote locations in virtual real-time.
- ◆ Also in May 1999, NovAtel entered into a joint venture to provide GPS products and services in Costa Rica and other Central and South American countries.
- ◆ GPS use for aviation received support from a study by Johns Hopkins University Applied Physics Laboratory, which concluded that an augmented GPS can satisfy the performance requirements to be the only navigation system installed in an aircraft and the only service by the FAA for operations anywhere in the National Airspace System.
- ◆ The Federal Aviation Administration (FAA) signed agreements with each of Honeywell and Raytheon for a Full-Scale Development of the Local Area Augmentation System (LAAS). The agreements call for the development of LAAS capability and position the FAA for procurement and fielding of LAAS beginning in 2003. Both industry and the FAA are expected to benefit from these agreements by sharing expertise and cost, resulting in timely certification and operational approvals. The FAA eventually intends to purchase up to 143 LAAS for use in the National Airspace System.
- ◆ Changed ticker symbol from NGPSF to NGPS.

Distribution

NovAtel sells its products through multiple channels – direct, dealers and value-added resellers – and in over 35 countries worldwide.



Region (Q1 1999)

Key Strategies

- ◆ Build OEM business by developing new and innovative products
- ◆ Continue to build presence in end user markets
- ◆ Expand international distribution network
- ◆ Maintain technological leadership
- ◆ Lead industry in customer support and service
- ◆ Develop significant opportunities for aviation

Investor Contact

Sonia Ross
NovAtel Inc.
1120 - 68th Avenue N.E.
Calgary, AB T2E 8S5

Telephone: 403•295•4532
Facsimile: 403•295•0230
E-mail: sross@novatel.ca
Website: <http://www.novatel.ca>